

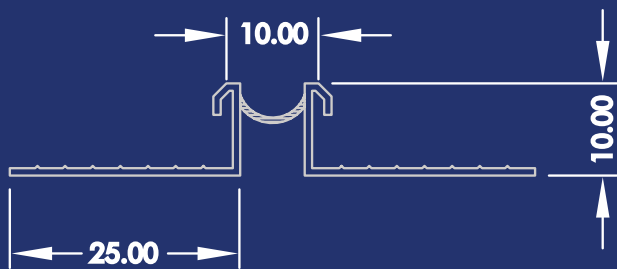
Renderplas

PVC_u BEADING FOR RENDERING, PLASTERING & DRYLINING APPLICATIONS



MOVEMENT JOINT

RMJ10



APPLICATION:

Must be specified where there is a structural movement joint. May also be used for day joints, or to define different coloured rendered panels. Should also be used in cases of a change to the background substrate.

CUTTING TO LENGTH:

Use fine toothed hacksaw or tin snips. PVC Pipe Weld adhesive can be used for butt joints.

COLOUR:

Currently stocked in the colour Sand (cream). Although upon request a range of colours are available (see the website). All Renderplas Beads are paint and texture friendly.

STORAGE:

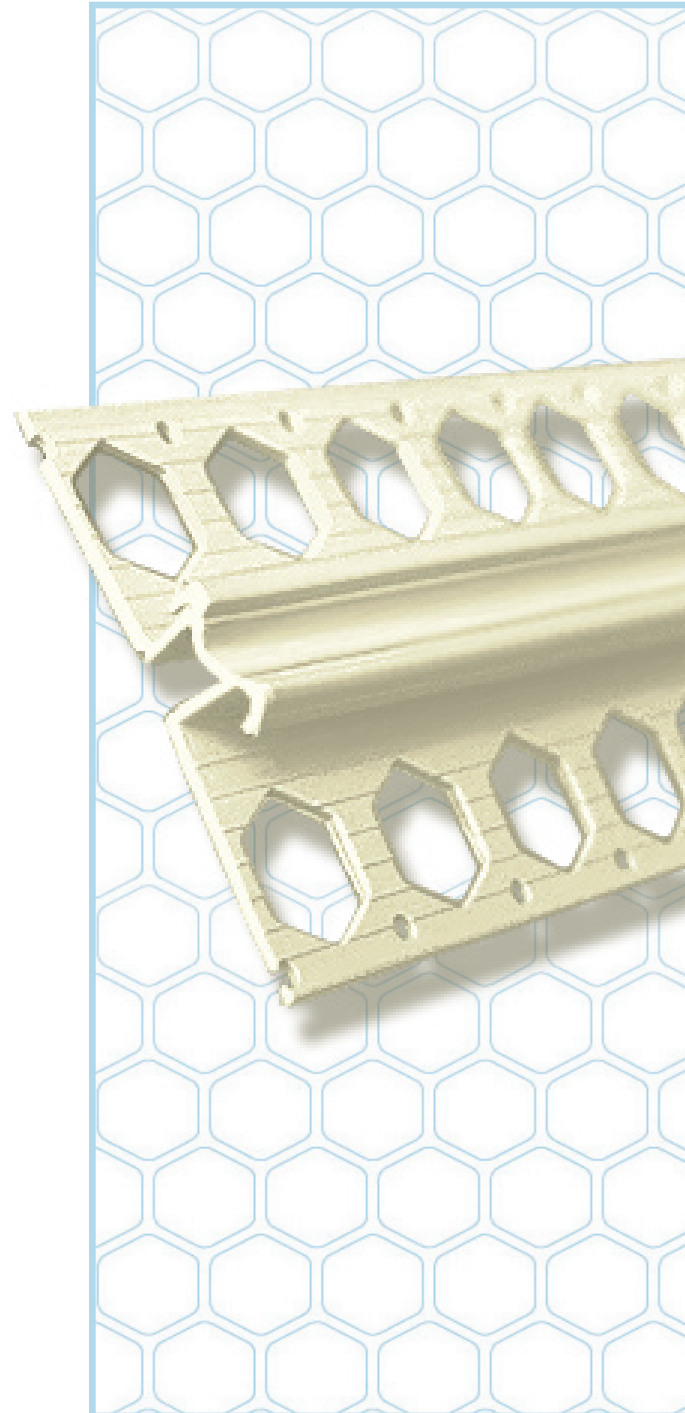
Store flat away from heat and direct sun.

FIXING:

To fix bead, apply a continuous line of adhesive mortar and plumb/level straight. Butt joints to be embedded in silicone mastic to prevent water ingress. Mechanical fittings are best avoided to prevent distortion of bead.

PACKING:

25 no. x 2.5m lengths in boxes (total 62.5lm).
25 no. x 3.0m lengths in boxes (total 75.0lm).



Profile Description:	10mm Movement Joint	10mm Movement Joint
Code:	RMJ102.5	RMJ103.0
Bead Length (m):	2.5 (total 62.5lm)	3.0 (total 75.0lm)
Render/Plaster Depth (mm):	10-12	10-12
Weight per box (kgs):	9.9	10.8
Box Dimensions (cm):	252 X 13 X 11	303 X 13 X 12